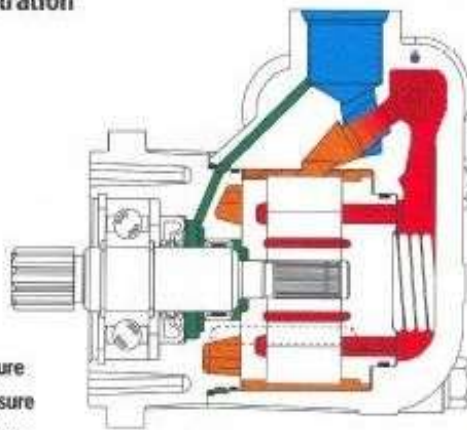


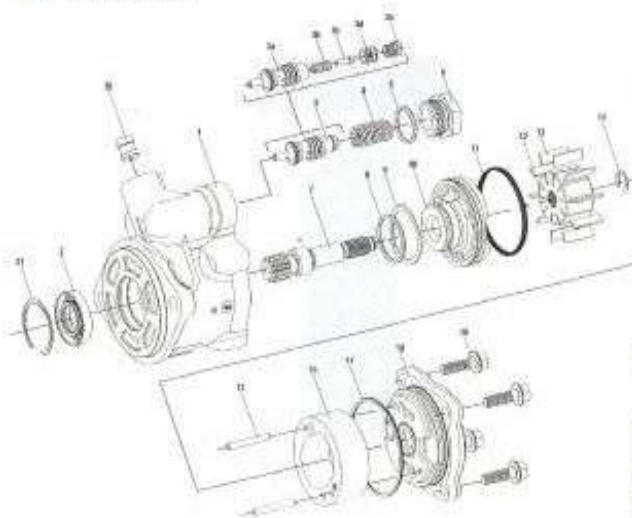
HEAVY DUTY TRUCK PARTS



Oil Flow Illustration



- Inlet Pressure
- Boost Pressure
- Outlet Pressure
- Seal Drain
- Pilot Pressure



Family PS

Displacement 18

- 18 = 18 cc (1.10cir)
- 22 = 22 cc (1.34cir)
- 25 = 25 cc (1.53cir)
- 28 = 28 cc (1.71cir)
- 32 = 32 cc (1.95cir)
- 36 = 36 cc (2.20cir)

Flow 14

- 12 = 12 lpm (3.17 GPM)
- 14 = 14 lpm (3.70 GPM)
- 16 = 16 lpm (4.23 GPM)
- 20 = 20 lpm (5.28 GPM)
- 24 = 24 lpm (6.34 GPM)
- 28 = 28 lpm (7.40 GPM)

Relief Setting 15

- 10 = 100 bar (1450 psi)
- 12 = 120 bar (1740 psi)
- 14 = 140 bar (2030 psi)
- 15 = 150 bar (2175 psi)
- 16 = 160 bar (2320 psi)
- 17 = 170 bar (2465 psi)

Direction of Rotation R

- R = Clockwise Rotation
- L = Counterclockwise Rotation

Shaft Type 1

- 1 = 11 Tooth 16/32 spline
- 2 = .625 dia. Woodruff key
- 3 = 7/8" b-flange-tapered shafts

Housing & Cover (Standard) 01

	Outlet	Inlet	Housing Orientation
01 = Right	Right	Top	0
02 = Right	Right	Top	0
03 = Right	Right	Left	0
04 = Left	Right	Right	0
05 = Left	Top	Top	0
06 = Left	Left	Left	0
07 = Right	Right	Right	90
08 = Right	Top	Top	90
09 = Right	Left	Left	90
10 = Left	Right	Right	90
11 = Left	Top	Top	90
12 = Left	Left	Left	90

18 Offset Cover

	Outlet	Inlet	Housing Orientation
13 = Right	Right	Left	0
14 = Left	Left	Right	0
15 = Left	Left	Top	0
16 = Right	Right	Top	0
26 = Left	Left	Left	0